

MASC Notching tool for profile cassettes etc.



- > Precision tool for simultaneous notching and marking (scribing)
- > 80 % time saving with 100 % accuracy of fit
- > Enables simple and efficient production of cassettes and coulters, Window sills... made of copper, zinc, aluminium, Uginox...

Limit values

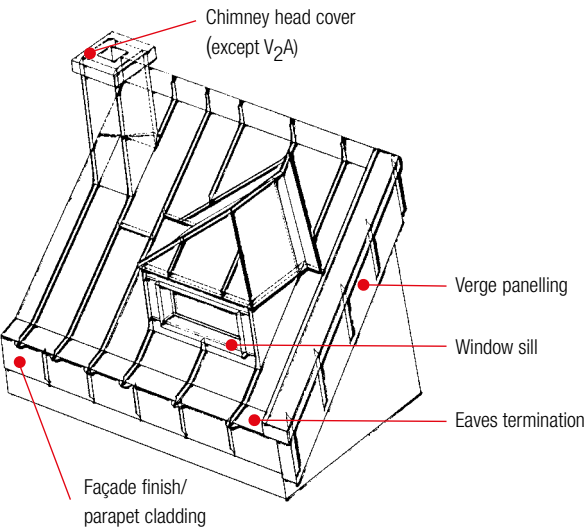
Aluminium	up to 0.8 mm
Copper	up to 0.8 mm
Zinc	up to 0.7 mm
Steel (uginox)	up to 0.5 mm



Item No.:	Description	Retailer packaging unit/piece
AWG	Notching tool basic unit 110 x 100 x 57 mm, 3.0 kg	1 B
HG	Hand-held device for AWG 680 x 100 x 120 mm, 9.2 kg	1 B

Ausklinkwerkzeug für Profilkassetten etc.
 Outil d'encochage pour caissons profilés

Utensile di sgancio per cassette profili
 Herramienta mortajadora para cajas de perfil



MASC Blade for notching tool

Thanks to an extensive range of special blades for the notching tool, a wide variety of geometries can be produced quickly and with reproducible precision. Other geometries available on request.

Item No.:	Description	Retailer packaging unit/piece
M90GS	Blade set 90° closed diagonal for 90 ° notches closed bevelled	1 B
M90GS45G	Blade set 90° angled closed for notches for AWG up to 45° roof pitch	1 B
M90GS450	Blade set 90° angled / half open for notches for AWG up to 45° roof pitch	1 B
MFB	Blade set for window sill for window sill notches	1 B
MH	Half-round blade set for half-round notches	1 B
MHS	Half-round blade set special for semi-circular notches on left-hand profile shares	1 B
MSO	Customised blade set for customer-specific special solutions	1 B

Messer für Ausklinkwerkzeug
 Lames pour outil d'encochage
 Lame per utensile di sgancio
 Cuchilla para herramienta mortajadora para cajas de perfil



Variant 1



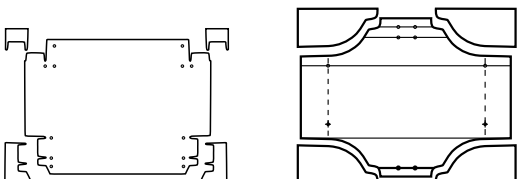
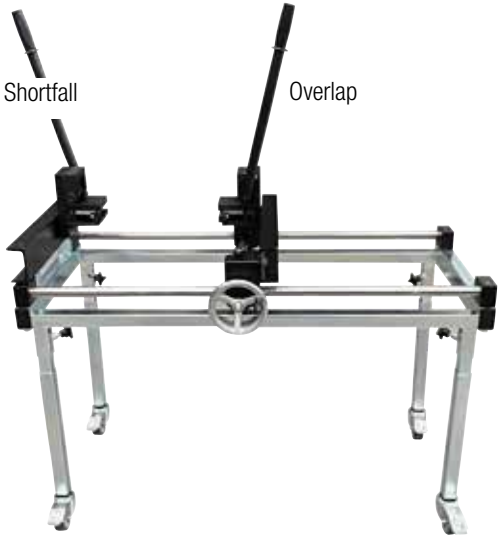
MASC S10 notching unit - integrated in S10 table and cutting system

- > Unit for creating a professional eaves termination (90° or semi-circular) on the under- and overlap
- > Device for mounting either one or two MASC notching tools with hand tool directly on the S10 cutting or work table, 1.0 m or 1.25 m wide
- > Continuous adjustment of the share width
- > Variable for belt feed from the left or right

Suitable for AWG, HG and various blades

Item No.:	Description	Retailer packaging unit/piece
S10AE.	S10 release unit consisting of: 2 AWG Notching tool Basic unit 2 HG Hand-held unit 2 blade set for under- and overlap 1 linear rail 1500 mm, for 1.0 m or 1.25 m table 2 trolleys for AWG mounting 2 sheet metal guides AWG top 2 sheet metal guides AWG bottom 2 sliding position stops	1 B

Variant 2



MASC S10 notching unit

- > Frame for mounting either one or two MASC notching tools in the hand-held device
- > This creates a device for the production of terminations on the underlap and overlap
- > Stepless adjustment of the share width via adjusting wheel
- > Stepless adjustment of the working height
- > Solid, tilt-proof frame
- > Can be docked to the left or right of a worktable



Suitable for AWG, HG and various blades

Item No.:	Description	Retailer packaging unit/piece
AEM90	contains: 2 AWG notching tool basic tool, 2 HG hand tool, 2 blade set M90GS450 for undercutting and overcutting, 1 base frame	1 B
AEMH	Consisting of: 2 AWG notching tool basic tool, 2 HG hand tool, 2 blade set MH for underlap and overlap, 1 base frame	1 B
AEMHS	Consisting of: 2 AWG notching tool basic tool, 2 HG hand tool, 2 blade set MHS for profiling for under- and overlap, 1 base frame	1 B

S10 Ausklinkeinheit
 Unité d'encochage S10
 Unità di intaglio S10
 Unidad de desenganche S10